



# Beaufort County Public Works Stormwater Infrastructure Project Summary

**Project Summary:** H.E. McCracken Circle

**Activity:** Routine/Preventive Maintenance

**Narrative Description of Project:**

Project improved 5,069 L.F. of drainage system. Cleaned out (1) manhole and 5,045 L.F. of roadside ditch. Installed twin driveway pipes. Jetted (1) crossline pipe, (4) driveway pipes and 24 L.F. channel pipe. Hydroseeded for erosion control.

**Duration:** 7/26/16 - 6/19/17

<b>2017-507 / H.E. McCracken Circle</b>	<b>Labor Hours</b>	<b>Labor Cost</b>	<b>Equipment Cost</b>	<b>Material Cost</b>	<b>Contractor Cost</b>	<b>Indirect Labor</b>	<b>Total Cost</b>
AUDIT / Audit Project	1.0	\$23.49	\$0.00	\$0.00	\$0.00	\$13.23	\$36.72
CLPINS / Crossline Pipe - Installed	50.0	\$1,092.10	\$259.45	\$73.15	\$0.00	\$696.00	\$2,120.70
DPJT / Driveway Pipe - Jetted	70.0	\$1,541.64	\$140.16	\$141.29	\$0.00	\$957.78	\$2,780.87
DWASPH / Driveway - Asphalt	40.0	\$881.50	\$121.98	\$53.34	\$0.00	\$563.70	\$1,620.52
HAUL / Hauling	110.0	\$2,393.90	\$1,036.20	\$2,329.96	\$0.00	\$1,586.20	\$7,346.26
HYDR / Hydroseeding	10.0	\$210.60	\$42.88	\$112.17	\$0.00	\$132.30	\$497.95
ONJV / Onsite Job Visit	6.0	\$161.46	\$10.86	\$13.84	\$0.00	\$95.01	\$281.17
RSDCL / Roadside Ditch - Cleanout	200.0	\$4,511.20	\$759.97	\$186.76	\$0.00	\$2,673.50	\$8,131.43
SG / Shoot Grade	26.0	\$664.93	\$43.38	\$23.69	\$0.00	\$439.35	\$1,171.35
STAGING / Staging Materials/Equipment	44.0	\$958.58	\$130.88	\$66.29	\$0.00	\$611.18	\$1,766.93
WDR / Wash down road	6.0	\$126.36	\$32.00	\$22.08	\$0.00	\$79.38	\$259.82
<b>2017-507 / H.E. McCracken Circle Sub Total</b>	<b>563.0</b>	<b>\$12,565.76</b>	<b>\$2,577.76</b>	<b>\$3,022.57</b>	<b>\$0.00</b>	<b>\$7,847.63</b>	<b>\$26,013.72</b>
<b>Grand Total</b>	<b>563.0</b>	<b>\$12,565.76</b>	<b>\$2,577.76</b>	<b>\$3,022.57</b>	<b>\$0.00</b>	<b>\$7,847.63</b>	<b>\$26,013.72</b>

Before



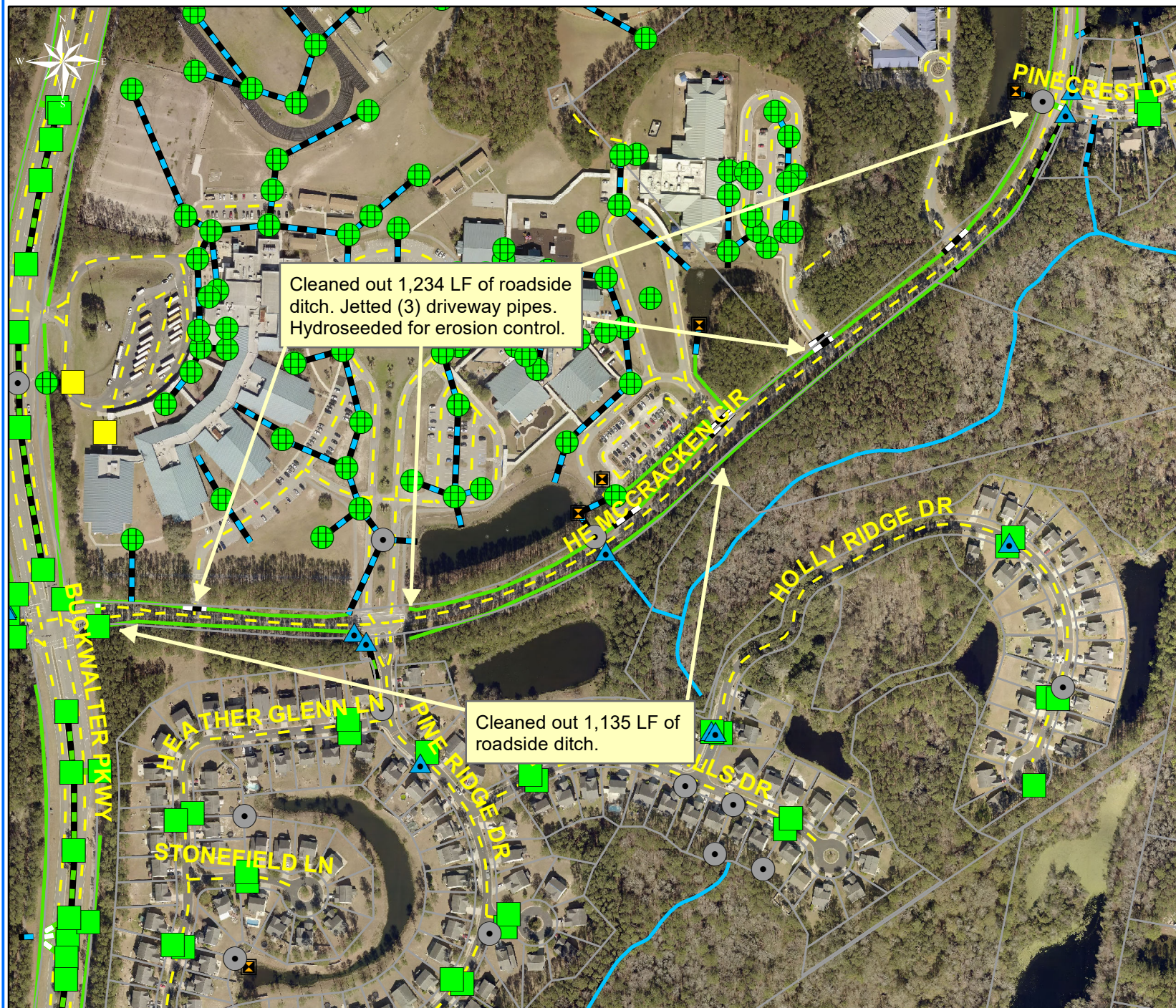
During



After







Project: H. E.  
McCracken Circle  
Map #1

Activity: Routine/  
Preventive  
Maintenance

Project #:  
2017-507

Township/SW Dist:  
Bluffton/4

Completed:  
June 2017

### Legend

#### Drainage Type

- Access Pipe
- Bleeder Pipe
- Channel Pipe
- Channel
- Stream
- Crossline Pipe
- Driveway Pipe
- Lateral
- Lateral Pipe
- River
- Road Pipe
- Roadside
- Roadside Pipe

0 80 160 320 480 640  
Feet

1 inch = 330 feet

Prepared By: BC Stormwater Management Utility

Date Print: 08/07/17

File: C:\project summaries map\HE McCracken Circle Map #1\_2017-507



Project: H. E.  
McCracken Circle  
Map #2

Activity: Routine/  
Preventive  
Maintenance

Project #:  
2017-507

Township/SW Dist:  
Bluffton/4

Completed:  
June 2017



### Legend

#### Drainage Type

- Access Pipe
- Bleeder Pipe
- Channel Pipe
- Channel
- Stream
- Crossline Pipe
- Driveway Pipe
- Lateral
- Lateral Pipe
- River
- Road Pipe
- Roadside
- Roadside Pipe

0 80 160 320 480 640  
Feet

1 inch = 330 feet

Prepared By: BC Stormwater Management Utility

Date Print:08/07/17

File:C:\project summaries map\HE McCracken Circle Map #2\_2017-507



Project: H. E.  
McCracken Circle  
Map #3

Activity: Routine/  
Preventive  
Maintenance

Project #:  
2017-507

Township/SW Dist:  
Bluffton/4

Completed:  
June 2017



### Legend

#### Drainage Type

- Access Pipe
- Bleeder Pipe
- Channel Pipe
- Channel
- Stream
- Crossline Pipe
- Driveway Pipe
- Lateral
- Lateral Pipe
- River
- Road Pipe
- Roadside
- Roadside Pipe

0 40 80 160 240 320  
Feet

1 inch = 170 feet

Prepared By: BC Stormwater Management Utility  
Date Print:08/07/17

File:C:\project summaries map\HE McCracken Circle Map #3\_2017-507